

Fynn - Lark News

MARCH 2024



THE PLANET WE INHABIT - THE MEGA AND THE MICRO

Professor Brian Cox* was the main, indeed the only attraction, at a high-profile event held at *The Regent* in Ipswich in mid-February. The tickets were expensive, but the event was sold out. It was an event vastly different from the usual musical extravaganzas held there. It must nevertheless have exercised a special attraction for potential audiences. Why?

Brian Cox is a brilliant exponent of the complexity and wonder of the universe. He is a brilliant communicator and displays a gloriously youthful enthusiasm about the wonders of the universe which we, as the seemingly unique human species, are privileged to inhabit. Few can compare with him in their ability to make us feel privileged to spend our brief time as insignificant little specks amidst the vastness of our universe. Those who attended seem to have emerged energized, swept away by the magnificence of it all. The power of quantum physics.

What has all of this to do with a Magazine like ours, dealing with the everyday lives of local people? My answer would be that, in the midst of our busy everyday lives, we can turn our gaze and attentions in both

**Magazine for the Parishes of Great & Little
Bealings, Playford and Culpho**

directions – towards both the mega and the micro. It is precisely because the universe is so vast, and for the most part hostile that we little specks here on earth need to pay attention to one another, to marvel at our shared privileges of being alive, to help one another. Those who subscribe to some kind of religious belief have their special ways of promoting such attitudes, but you do not need to be religious to see the manifold benefits which accrue from helping and supporting one another, rather than creating a human world which foments hostility between individuals, communities, and nations.

In the mega dimension, we do need to gaze into the starry distance, to feel the full scope of how privileged we are to enjoy that miracle of life, in the midst of a universe which is otherwise, apparently, almost entirely barren. On the other hand, in our own micro-sized corner of the vastness of the universe, here we are, human beings, increasingly crowded together on a unique planet. So many of us, so privileged to participate in the miracle of life, and yet we still cannot find the formula for living peacefully together, and for preserving this unique habitat of ours.

Just as charity begins at home, so does caring for the habitat and caring for one another. We can look up at the stars, or we can contemplate the collective navel. Mankind can continue to spend vast amounts of money on space exploration, but still needs to deal with the many problems which confront us here on earth. We need to get the balance right. It is no good gazing at, and reaching for the stars if, in the process, you trip over the kerb, or perhaps more topically, stumble into a pothole.

So, reflecting, as it seems, the views of those who crowded into *The Regent*, thanks to a brilliant communicator for giving us a reminder of what a privileged species we are, and what an extraordinary universe we inhabit.



Norman Porter Editor FLN.



Brian Edward Cox CBE FRS is a physicist and musician who is a professor of particle physics in the School of Physics and Astronomy at the University of Manchester.

FEBRUARY LEAD ARTICLE—ERRATUM

Last month's feature omitted crucial dates regarding the Sewage Scheme and should have read as below. We apologise for the omission. *Editorial Team*

..... *This means that we will need to close certain roads as we work, we have the following scheduled traffic management. Please note, depending on when we start our works, these dates may change, and we will of course be in touch to confirm this.* “

Dates	Details
03 April to 18 Sept	The Street – Road Closure.

CONTENTS

NEWS & GENERAL INTEREST	<i>PAGE 3</i>
GREAT BEALINGS	<i>PAGE 15</i>
LITTLE BEALINGS	<i>PAGE 19</i>
PLAYFORD	<i>PAGE 31</i>
CULPHO	<i>PAGE 37</i>

NEWS & GENERAL INTEREST

MAGAZINE FINANCES

Our grateful thanks to the significant numbers of people who responded to our appeal for further financial support. We are hugely grateful, not only for the practical effect of that extra support, but also for the kind words of motivation which accompanied many of those offers. If you somehow managed to leave the response sheet to one side, intending to fill it in some time, please be assured that additional offers remain more than welcome. Thank you all.

Editorial Team

LEADING ARTICLES

- A CHANCE TO MAKE THE FRONT PAGE

Normally our Parish Councils manage to produce something of local interest or concern to fill the front page of this Magazine. Occasionally, however, there is a lull. This month is a case in point. A space to be filled. That explains why your editor found himself trying to think up something which could head up the March edition. Hopefully, you will find it of some interest.

This does give us the opportunity to make the point that this is a contributor-led Magazine. Anyone – yes, anyone - in our four villages could equally well come up with an item for possible publication. Of course, the writer must take responsibility for the content, respecting the usual conventions, but if you have something which you think would be of interest to our wider community, do submit it in the usual way, and we will give it all due consideration.

LOCAL FLOODS — A THIRD DOSE.....AND MORE

And still the rains keep coming. The weekend of 10th/11th February saw the rivers overflowing their banks yet again. Happily, there were no reported incidents of flooded homes. We understand that the laborious procedure of actually accessing compensation for previous damage is proceeding more slowly than surely, but that hopes for a successful outcome remain.

PLANT SALE RAFFLE

This raffle, held alongside the Plant Sale, is a vital source of funds. Members of the Plant Sale committee have made good use of contacts to source a range of lovely prizes. We can always do with more, so if you would like to offer some sort of prize, please contact the over-all organiser, Caroline Saunders, at Grotto Farm, Great Bealings.

As in previous years, we are taking the liberty of including a book of 5 tickets @ £1 each with every copy of the FLN delivered in Great or Little Bealings next month. Playford and Culpho enquiries always welcome!

Obviously, we would love as many people as possible to buy their book of tickets, and to return the stubs and money to a convenient collection point (to be notified on delivery of the tickets), but please do not be offended at this "blanket" form of delivery. The Plant Sale is a community event, and we try to engage as many people in it as possible. Thank you in hopeful anticipation.



Improving hearing. Changing lives.



Local, award-winning Audiologist returns with a new business, All About Hearing.

Karen's highly experienced audiology team are dedicated to providing you with exceptional, personalised hearing healthcare because we know that every individual is unique.

- Comprehensive hearing assessments
- Fitting of the very latest hearing systems
- Superlative aftercare service
- Microsuction & irrigation ear wax removal



Two Rivers Medical Centre:
30 Woodbridge Road East, Ipswich
Gilmour Piper:
10 Fonnereau Road, Ipswich



Karen Finch
RHAD FSHAA FRSA
Lead Audiologist

Better hearing starts here. Book your appointment today!
Call 01473 946444 or book online at: allabouthearing.co.uk

GLASS JARS NEEDED

– saving you a trip to Tesco recycling or to Foxhall, here is a constructive way to re-use your glass jars:

I am collecting glass jars to recycle into vases for selling small flower arrangements for the Bealings Plant Sale. If you have any, let me know and I would be happy to collect, or you can drop off to the porch at **Finches Hill** (opposite the Village Hall). Thank you so much!
Kate McGough (07950 743 566); kate.e.mcgough@gmail.com

ADVANCE NOTICE

NEW TECH HUB COMMUNITY INTEREST COMPANY

We understand that a local CIC is to be set up, based in Grundisburgh called a Community Tech Hub. CICs are non-profit making companies, designed to benefit local communities. This particular company aims to help people navigate their way through that tortuous digital world which now seems to be an intrinsic part of our lives. With the much-publicised closure of ever more High Street Banks, 40% of the nation's crimes now said to stem from on-line fraud, plus all the issues of accessing NHS apps and portals, the need for help, particularly of those who have not grown up alongside the digital revolution, has become acute. A briefing event has been organised for the 22nd March at the Grundisburgh Village Hall, starting 3pm where the team will be sharing some of the many issues affecting people and how to deal with them. Anyone interested in attending, please make contact with paul@communitytechhub.org.

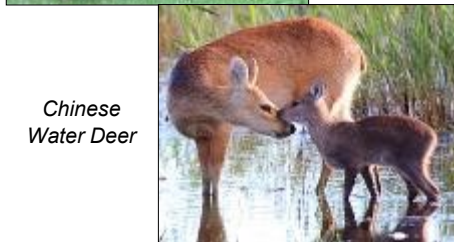
NATURE NOTES – LOCAL DEER

Deer are the largest amongst the major wild mammals roaming the British countryside. Mentions of deer and venison used to go hand-in-hand with thoughts of aristocracy, grand estates,

and a privileged source of meat. Nowadays, deer abound. There are so many of them, that landowners feel it necessary to watch numbers, and to cull as they feel necessary. Deer find it difficult to match their roaming habits to the presence of fast-moving traffic as the many corpses alongside our roads will attest. Their grazing habits and agility bring them into hostile contact with gardeners and farmers. Over-all, though, sightings of these graceful, timid, gentle creatures enhance our countryside, and still have the capacity to make people stop in their tracks, and just watch them, fearful of alarming them.



Fallow Deer



Chinese Water Deer



Muntjac



Red Deer

Our most common native deer, the **roe deer** is a slender, medium-sized deer. It has short antlers and no tail. It is mostly brown in colour, turning reddish in the summer and darker grey in the winter. It has a pale buff patch around its rump. It tends to be solitary in summer, but forms small, loose groups in winter. Roe deer live in areas of mixed countryside that includes woodland, farmland, grassland, and heathland. They eat buds and leaves from trees and shrubs, as well as ferns, grasses, and heathers.

The **muntjac** is the most widely distributed deer in Suffolk after the native roe deer. It can be found in woodland, parkland and even gardens. Muntjac deer are notorious browsers, eating the shoots from shrubs, as well as woodland herbs and brambles. This damaging of woodland has been linked to declines in species such as nightingales. Muntjac breed all year-round, but females usually only have one kid at a time. These deer are also known as 'barking deer' because of their dog-like calls.

Minsmere has the largest herd of **red deer** outside Scotland. You can watch them from a viewing point that looks out over the fields where these magnificent creatures gather in the autumn for the annual rut. The park at Helmingham Hall has large herds of both **red and fallow deer**. The deer have been in the Park for centuries. Fallow deer are said to have been brought to these shores from the Mediterranean for hunting, probably by the Normans in the 11th century. They are identified by their coat, a russet background speckled with white, although the colour can vary from almost black to near white and the characteristic markings may even be absent. Fallow deer lie low in woodland and copses, but can be regularly spotted in fields and on heathland. They are said to be a common sight, notable hotspots being Sutton and Hollesley Common, and Rendlesham Forest. There are also increasing numbers of **Chinese water deer**, the deer with tusks. One of the best places to see them is at Suffolk Wildlife Trust's

Carlton Marshes Reserve.

Google yielded this short poem, which seems to sum it all up:

The Meadow's Song

*In meadows green, where flowers bloom,
A deer prances, dispelling gloom.
Its gentle gaze, like morning dew,
Brings nature's peace into view.*

HISTORY CORNER

– CHURCHILL'S SECRET ARMY

It was recently announced that thought was going into the possibility of setting up the foundations of a citizens' army, in the face of a threatening world situation. This has chilling echoes of a similar situation faced by this country in 1940. In that year, this country had to prepare for the very real threat of invasion.

In the face of that threat, Winston Churchill put in place the structures of a Secret Army, whose task it would be to become the British Resistance. The existence and potential operational orders of this Secret Army were not fully revealed until 50 years had elapsed after the end of the war. Most people have come to know and love the Home Guard, not least through "Dad's Army," but the separate detachments which formed the Secret Army were an equally important, if less well known, aspect of home defence.

The Bealings History, "Walking through History" contains significant detail about the Bealings Section of this army: the location of their bunker, their weaponry, their orders in the event of invasion, all included in the reminiscences of a now deceased member of that section.

A local Historian, **Roger Romney Brown**, living in Melton, has researched the history of these detachments, specifically the Suffolk units, and has written a detailed article about their intended function and significance. A full version of this article can be obtained by email from

the Editor (see back page), but we have space to offer an edited version by way of an appetiser:

SUFFOLK'S SECRET ARMY
– ROGER ROMNEY BROWN



Hitler's Directive Number 16 from July 1940 stated that, "Since England, in spite of her hopeless military situation, shows no sign of being ready to come to an understanding, I have prepared a landing operation".

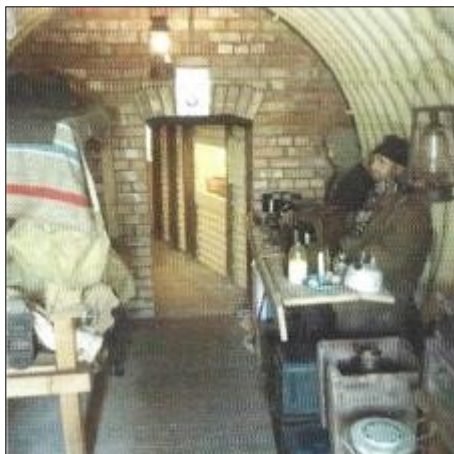
The events of May-June 1940 meant that Britain's position was indeed perilous. The remnants of the British Expeditionary Force had been evacuated from the beaches of Dunkirk and Hitler's Blitzkrieg tactics had been devastatingly effective across mainland Europe.

On 15th June 1940 General Ironside, C-in-C, Home Forces stated: "I am trying to piece together an Army in the most terrible crisis that has ever faced the British Empire". Shortly afterwards, on 17th June 1940, General Head Quarters (GHQ) Auxiliary Units (Aux Units) was formed. Its role was twofold: **sabotage and espionage**.

The Aux. Units consisted of three elements: **Scout Sections, Special Duties Section and Operational Patrols**.

There were three main groups targeted for the patrols. Firstly, there were those men too young to be called up, then those too old to be called up and, thirdly, the largest contingent, those in reserved occupations, for example farmers, gamekeepers, and engineers. Men would be chosen for their knowledge of their

local area and, of course, many of them would have learned how to handle firearms from an early age. Each patrol would operate from an underground Operational Base which was equipped with sufficient rations, ammunition, and demolition equipment to last approximately 14 days.



The above photo is of a replica of an Operational Base (OB) at the British Resistance Museum at Parham. The Museum there has examples of the many early weapons used by Auxiliaries (Auxiliaries). Once fully equipped, their arms would include a Sten gun, .38 pistol, a Commando Fighting knife, together with large quantities of incendiaries, explosives, 'time pencil' detonators and booby traps.

When the Auxiliary Army was 'stood down' in 1944, the Operational Bases were vacated, very often leaving quantities of firearms and explosives behind.

Roger Romney Brown - with acknowledgement to the Parham Airfield Museum. (One mile Southwest of Great Glemham - post code IP13 9AF).

Highlands

Where your family is part of ours

We are welcoming new residents for long term or respite care.

Why not come and join our Highlands family? Our aim is not only to care for you but to make you feel especially cared for.

To find out more visit our website or phone our manager, Heather on **01394 386204**

HIGHLANDS CARE HOME
 Fitzgerald Road, Woodbridge, Suffolk IP12 1EN

We are an independent member of the Abbeyfield Society

Overall rating **GOOD**

highlands-care.org

SAFER VILLAGE DRIVING (SAVID) - FUTURE MEETING



The next SAVID meeting will be held on
18th April 2024
Martlesham Parish
Room, IP12 4PB
6.30 pm.

All welcome to attend. Great Bealings, Little Bealings, Playford, Grundisburgh & Culpho parish councils are all members of this community group with neighbouring villages, which is also participates in ESC's Community Partnership Road Safety Forum. Topics will include 'Speed Indicator Device' (SIDs) results and Community Speed Watch updates. For more details contact: suffolksavid@gmail.com

BEALINGS VILLAGE HALL AND PLAYING FIELD NEWS

RECENT WORKING PARTY: JOHN BELSTEAD PLAYING FIELD

A big thank you to all those who helped clear the fence-line of overhanging trees and branches in the drizzle. There is no planned working party for March but keep your eyes open for news of one in April / May

ROOF & DOORS PROJECT

Latest update from Bealings Village Hall. More generous donations from Little Bealings residents has now brought the total pledged / donated so far to £54,509 -

The results of the recent grant applications submitted will be known in the May / June timeframe and will

hopefully help us reach the target of £95,000.

Pop Up Pub

The next Pop Up Pub is scheduled for

Friday 12th April
5:30 p.m. - 10:30 p.m.

Once again we hope to have live music from Alex Gaston

Food will be served from 6:00p.m. - until we run out, and will be the popular Baked Potatoes with 1 topping for £4.00, extra toppings £1.00

There will also be a raffle, so please bring your donations on the night.

Look out for the reminder posters around the Villages and updates on the Bealings & Playford Newsgroup.

Volunteers to help are always welcomed !

All profits go towards the New Roof & Doors Project

MOBILE LIBRARY

The Mobile Library visits every 4 weeks on Thursdays stopping at

Playford Phone Box
 1.50-2.05 p.m.

Little Bealings Angela Cobbold Hall
 2.15-2.45 p.m.

14th. March 11th. April.

9th. May 6th. June

4th. July 1st. August

29th. August 26th. September

24th. October 21st. November

19th. December

BEALINGS VILLAGE HALL EVENTS – MARCH 2024

Annual Parish Meeting	Monday 4 th 19:00 – 21:30	<i>e: littlebealingspc@btinternet.com</i>
Monday Pilates with Didi	19:30 – 20:30	Helen: 07889 907615
	11 th , 18 th , 25 th ,	
Tuesday Pilates	09:30 – 10:30	Caroline Boggon: 07850 683196
	5 th , 12 th , 19 th , 26 th ,	
Tuesday Ballroom Dancing	19:30 – 21:00	Teresa Jay: 07929 310480
	5 th , 12 th , 26 th	
Wednesday Dance Class	09:30 – 12:30	Debbie Watkins-Jones: 07711 161522
	6 th , 13 th , 20 th , 27 th ,	
Wednesday Carpet Bowls	14:00 – 16:00	Kathy Price: 01473 621419
	6 th , 13 th , 20 th , 27 th ,	
Friday Dance Class	09:30 - 12:15	Debbie Watkins-Jones: 07711 161522
& Pilates	1 st , 8 th , 15 th , 22 nd , 29 th ,	
	12:30 - 15:15	Kelly Steventon: 07919 377855
Friday Pilates	1 st , 8 th , 15 th , 22 nd ,	
	10:00 – 11:15	Caroline Boggon: 07850 683196
Saturday Yoga	2 nd , 16 th , 23 rd , 30 th ,	

AVAILABLE FOR HIRE

SNOOKER ROOM £15 for up to 4 hours *bookings.vh.bealings@btinternet.com*
 Just been re-felted and looks fantastic: 07769 195132

MAIN HALL £11/hr Bealings residents *bookings.vh.bealings@btinternet.com*
 With stage, kitchen/bar and main hall capacity 270 07769 195132
 Tables & chairs for up to 100 people
 Free Wi-Fi

COMMITTEE ROOM £6/hr Bealings residents *book-ings.vh.bealings@btinternet.com*
 Tables & chairs for up to 20 people 07769 195132
 Free Wi-Fi

JOHN BELSTEAD SPORTS COURT *jbpsecretary@bealingsvillagehall.org.uk*
 Facilities for tennis, netball, basketball 07925 181390
 5 a-side football: Various hourly rates
 Or subscribe for the year
 Residents Bealings/Playford/Culpho @ £35/family
 Non-local residents @ £70/family

PLANT SALE

Saturday 27th April 2024
10am - 12pm

BEALINGS VILLAGE HALL

FREE ENTRY

A PLANT LOVER'S PARADISE!

- Home-grown plants for sale at bargain prices (cash only)
- All proceeds to both Bealings churches
- Free parking
- Teas, coffees and homemade cakes

Find us on Facebook "Bealings Spring Plant Sale"

RMC WINDOWS

FOR ALL YOUR REPLACEMENT WINDOWS, DOORS, CONSERVATORIES AND GENERAL BUILDING WORK

TEL 01394 448403

MOB 07766228552

Pointers View
Boot Street
Great Bealings
Woodbridge

MDA

We have moved!

Find us behind Honey & Harvey at
12 Riduna Park, Station Road,
Melton, Woodbridge
Suffolk, IP12 1QT
01394 382544

www.mullinsdowse.co.uk
mail@mullinsdowse.co.uk



Winner of RIBA Suffolk
Craftsmanship Award 2023



Award winning
architecture practice
that has been at the
heart of the east
Suffolk community for
over fifty years

Winner of East Suffolk Council
Quality of Place Award 2023



RIBA #
Chartered Practice

arb
Architects Registration Board

CIAT
Construction Industry Architecture Team

Mullins Dowse
Architects

The Granary Bed & Breakfast

HALL FARM ROAD, GREAT BEALINGS IP13 6NY

Two beautiful en suites, with king sized beds:- delicious
breakfast brought to your rooms at time of your choice.

Phone Leah or Julian on 01473 735880



Closed for refurbishment - reopening for bookings after 8th April 2024



www.woodbridgebb.co.uk

Leah Hinks' Pottery Classes at The Granary

Ever been curious to try out pottery? Artist and experienced potter Leah runs two after-school classes on Wednesdays. The classes take place in her beautiful bright studio, and are perfect for children to explore their creative side.

Leah also offers adult classes on Tuesday evenings.



*All classes are all back to normal and if you would like to join,
just contact Leah for more details on 01473 735880.*

GREAT BEALINGS

RECTOR

Father Nigel Prior, St Mary's Rectory, 11 Church Street, Woodbridge. 01394 610424

PARISH COUNCIL CLERK

Mrs Dee Knights, Dunure, 39 Avocet Lane, Martlesham Heath, IP5 3SF Ips 624240

PCC SECRETARY

Mr Eric Barnett, Southernhay, Lodge Rd, Great Bealings Ips 738803

PARISH COUNCIL

Summarised notes of the Parish Council meeting held on 30th January 2024

Planning Application - DC/23/4799/FUL – Pointers View, Boot Street – Single storey extension with balcony above.

Cllrs were shown a photo taken the previous day from Whimbrels, the neighbouring property to the west of Pointers View, which illustrates how close the side of Pointers View is to the boundary between the two properties. They considered that the inclusion of a balcony on the proposed extension would result in an unacceptable loss of privacy for the next door neighbours. It was resolved unanimously to object to this application. Sally Johnson had declared an interest in this application and did not take part in the vote.

DATE OF NEXT MEETING

Tuesday 12th March at 6.30pm

The public are welcome to attend any Parish Council meeting and may speak for a maximum of 3 minutes on any item on the agenda in the Public Participation session. Full draft and approved minutes of the Parish Council are available on the Council's website. The agenda is published approx. a week in advance of a meeting.

Dee Knights – Clerk 01473 624240

Email: greatbealingspc@hotmail.co.uk

Website: www.greatbealings.co.uk

ST MARY'S

CHURCHWARDEN'S NOTES

Looking back

Our service on the first Sunday of February celebrated Candlemas and was well attended.

A PCC meeting was held on February 6th at The Rectory in Woodbridge. The Treasurer summed up our current situation, warning that funds were consistently draining away, with the accounts showing a loss year on year. This was clearly unsustainable.

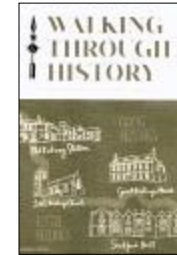
That provided the context within which the status of the church was discussed, alongside plans to re-order the interior so as to make the church more suitable for a wider range of community events, as well as more intimate and more welcoming for church services. All that without damaging the intrinsic beauty of the building and its interior.

Architect's plans are available and have been roughly costed. It is clear that we are at a significant moment in the history of this centuries-old church, and that, if it is to have a role to play well into the future, something drastic has to be done. It was agreed that whatever was agreed would have to be a project to engage the whole Great Bealings community, not just current churchgoers, but also those many others who have reasons to ensure the on-going viability of the building and surroundings.

We now have on display in the porch a small plaque showing how the Suffolk Historic Churches Trust has helped us with funding over the years. This plaque

WALKING THROUGH HISTORY

320 fully illustrated pages of the History of Little and Great Bealings. 500 copies sold. Not available in book shops. Some copies still available from the author @ £20. Local delivery available.



Contact: Norman Porter
nhp@rillcott.co.uk or 01473 735565.

The book contains much information about the local area, together with details of 5 local walking trails.



•MOT's•SERVICING•TYRES

01473 735575

MOT Classes 4 & 7

Servicing & Repairs

Diagnostics

Tyres

Aircon

EV Qualified



Essex & Suffolk
PEST SOLUTIONS

Your Local Pest Control Experts
for homes and businesses

- Free advice, fast response
- Highly accredited (NPTA)
- Fully qualified & insured
- Discreet –unmarked vehicles

All pests covered
from rodents & insects
to moles & birds

info@eandspestsolutions.co.uk

Tel: 01473 328092

E. B. Button & Sons Ltd.

Funeral Directors

24 St. Johns Street

Woodbridge

Suffolk IP12 1EB

Tel: 01394 382160

Fax: 01394 386814

Directors:

D. E. Moore Dip.F.D.

J. V. M. Moore

K. J. Eagle

C. S. Moore Dip.F.D.

S. J. Moore

Registered in England No 1193659

came as part of the recent celebrations, and also reflects the many years that the village has participated in the Annual Cycle Ride in support of the Trust.



The plaque is on the top right of the notice board, while items relating to the Commemorative Service held in the cathedral last year are placed bottom left.

LOOKING AHEAD

Our pattern of 1st of the month Communion Services at 9.30 is set to continue into 2024, as is our regular Morning Prayer service on the third Sunday, at 10.30. Readers and additional local volunteers take that service. An opportunity for quiet reflection. Refreshments are served after all services.

CHURCHYARD

The vegetation is still slumbering. No need for grass-cutters to be on the alert quite yet. That said, the churchyard at this time of year still offers a good opportunity for a walk-around, a small detour from the footpath. The snowdrop-into-daffodil-into cowslip season always makes a visit worthwhile.

SERVICES FOR MARCH

Sunday March 3rd:
9.30 - Family Communion

Sunday March 17th
Morning Prayer

Do check up on the St Mary's, Woodbridge, website for other possible services. There is a special **Mothering Sunday Service arranged for Sunday 10th March.**

RECTOR'S "SURGERY." We offer people the chance to invite our Rector into their homes to get to know him better, and vice

versa. The regular day for this is Monday, either morning coffee or afternoon tea. If you would like to fix a future slot please contact churchwarden, Norman Porter nhp@rillcott.co.uk, who is i/c the rota, and can offer possible future dates.

Norman Porter, Churchwarden
nhp@rillcott.co.uk

FRIENDS OF GREAT BEALINGS CHURCH

(in partnership with Friends of St Mary's Church, Woodbridge)

Plans have been firmed up for the Bealings Plant Sale on April 27th in the Village Hall. The first glimmerings of spring may be an incentive to get to work on preparing plants and seed trays. Full details will appear in the issue appearing at the end of March, but, in the meantime, offers of raffle prizes, and getting down to preparing plants and seedlings will be very useful preliminaries.

A number of emails have been sent out inviting people to open gardens on June 22nd. We have received some positive replies, but not, so far, enough to go ahead with making full arrangements. We need 10/12 gardens to be open to make the event viable. We already have an offer of a final venue, so the framework is in place. If you would like to open up your garden to visitors on that day, please get in touch.

CHURCH FLOODLIGHTS

Nothing specific this month.

If you would like the lights to shine forth for personal celebrations/ commemorations please drop a note in to Norman Porter, Rill Cottage, Kiln Lane with payment, explaining why you would like the church floodlit, so that it can be recorded in the FLN, for posterity's benefit. If urgent, a holding email nhp@rillcott.co.uk will do the trick, with payment to follow.

DJC Services

Landscaping And Plant Hire



- Garden maintenance
- Hedge cutting
- Grass cutting
- Fencing
- Tree stump removal
- Drainage
- Concreting
- Small / Large land scaping
- General property maintenance and repairs



Registered waste carriers

Fully Insured



Your Local Friendly & Reliable Service...

Call Dan on: 07938809801 or 01473625441

Or Email us at carter9dz@btinternet.com

LITTLE BEALINGS

PRIEST IN CHARGE

Reverend Gary Jones

revgaryjones1985@gmail.com

07714 614095

PARISH COUNCIL CLERK

Mrs. Carol Ramsden,

littlebealingspc@btinternet.com

07731 456133

PCC SECRETARY

Toni Cornish

lbpcsecretary@gmail.com

07583 743695

LITTLE BEALINGS PARISH COUNCIL - NEW EMAIL ADDRESS

The Council's email address is changing with immediate effect. Please contact the Council using:

littlebealingsparishcouncil@gmail.com

Carol Ramsden - Clerk

07731 456133

Email: littlebealingsparishcouncil@gmail.com

Website: <https://littlebealings.onesuffolk.net/>

LITTLE BEALINGS ANNUAL PARISH MEETING

7.00 p.m. on Monday 4 March 2024

The Annual Parish Meeting will be held at 7.00p.m. (note – not 7.30 p.m.) on Monday 4 March in Bealings Village Hall. Updates will include:

- Anglia Water First Time Sewerage Scheme for The Street
- Neighbourhood Plan
- Bealings Village Hall Replacement Roof Project

All parishioners of Little Bealings are invited to attend the Annual Parish Meeting. Please see our website for more information and the updated Notice of the meeting <https://littlebealings.onesuffolk.net/parish-council/pc-agenda-list/>

Carol Ramsden - Clerk

07731 456133

Email: littlebealingsparishcouncil@gmail.com

Website: <https://littlebealings.onesuffolk.net/>

PARISH COUNCIL

Apologies that Notes were not published in the February edition of the Fynn Lark News as intended.

Notes of matters considered at the Parish Council meeting held on 4 December 2023

DECLARATION OF INTEREST

A Councillor made a declaration of interest in an item on the Agenda in accordance with the Council's adopted LGA Code of Conduct and left the meeting as appropriate.

PUBLIC PARTICIPATION SESSION

The following Agenda item was raised:

DC/22/5004/FUL | Retention and completion of construction of 1 No building and use of land for vehicle and plant hire operator(s) comprising officer, workshops, associated parking, drainage infrastructure etc to allow for the hire, storage, sale, maintenance and servicing of vehicles, paint, machinery and equipment following enforcement case ref: ENF/21/0552 in relation to previous consent DC/19/2666/FUL | Kesgrave Quarry Sinks Pit Main Road Kesgrave

HIGHWAYS

County Councillor Bryce had been sent

another list of outstanding items; no reply had been received and no works carried out by SCC.

A banner had been displayed in Playford Road during Road Safety Week (19-25 November).

PLANNING APPLICATIONS

DC/22/5004/FUL | Retention and completion of construction of 1 No building and use of land for vehicle and plant hire operator(s) comprising officer, workshops, associated parking, drainage infrastructure etc to allow for the hire, storage, sale, maintenance and servicing of vehicles, paint, machinery and equipment following enforcement case ref: ENF/21/0552 in relation to previous consent DC/19/2666/FUL | Kesgrave Quarry Sinks Pit Main Road Kesgrave

It was resolved to maintain the Council's objection to the application and support the wellbeing of adversely affected residents, as there is no effective surface water drainage plan and the Council understands there has been recent discharge into the brook within the SSSI, and as noise management remains a concern; the Council understands that recent noise testing data has been discounted by the Environment Agency.

ESC has approved the following application:

DC/23/2887/FUL: Single-storey extension: Little Oaks, Lower Street, Great Bealings SCC/0059/23SC - Land off The Street, Little Bealings Construction of a Sewage Pumping Station, footpath, fencing, and associated apparatus Anglian Water

It was noted that tree work and archaeology work were timetabled. The Chairman and Mr Garnham had met with Anglian Water to discuss minimising disruption during the installation of the sewer in 2024.

DC/23/2095/VOC | Variation of Condition No. 2 of DC/22/2984/FUL - Construction of one detached dwelling and garage - Change approved drawings to reflect amendments to Design. | Woodside Martlesham Road

It was noted that the application remained undetermined although the development appeared complete. Some concern had

been expressed by residents that the garden was being used as a builder's yard. It was resolved not to refer the matter to ESC at present as no formal complaint had been made to the Council and residents could raise the matter directly with ESC.

ESC RURAL DEVELOPMENT AND HEALTHY ENVIRONMENT SUPPLEMENTARY PLANNING DOCUMENTS CONSULTATIONS

There were no comments to make on the documents.

NEIGHBOURHOOD PLAN

It was resolved to replace the Councillor Focus Group with a Neighbourhood Plan Working Group comprising three Councillors (Peter Carr, Kathy Price and Helen Saagi) and four volunteer residents: Frances Mutimer, Liz Mutimer, Ian Seeley and Jenny Shaw. The residents were thanked for volunteering and proposed Terms of Reference for the Group were amended and adopted.

CONSULTATION ON PLAYFORD NEIGHBOURHOOD PLAN

There were no comments on the draft Plan.

ESC REFUSE AND DOG WASTE BIN POLICY CONSULTATION

There were no comments on the proposed policy.

SCC SHAPING THE FUTURE OF LIBRARY SERVICES 2023 CONSULTATION

It was agreed to respond to the consultation expressing support for the mobile service, which visited the parish once a month.=

FINANCE

Nil income had been received. Expenditure for Neighbourhood Plan Mapping Software (£54) was approved.

BEALINGS VILLAGE HALL ROOF AND DOORS PROJECT

It was agreed to become the Contributing Third Party for a grant application and to pay £4,837.50 of the Council's CIL funding allocated to the project accordingly, if the application was successful.

NOTES OF MATTERS CONSIDERED AT THE PARISH COUNCIL MEETING HELD ON 8 JANUARY 2024

In the absence of the Chairman the meeting was chaired by Mr Cheeseman, the Vice Chairman of the Council.

DECLARATION OF INTEREST

There were no declarations of interest in items on the Agenda.

PUBLIC PARTICIPATION SESSION

The following Agenda items were raised:
Planning Applications: DC/23/4637/FUL | Demolition of Barn E and adjacent buildings, and the erection of 2no. new-build dwellings (Plots 1 and 2) with garages, and associated driveways/gardens | Barn E Grove Farm The Street; DC/23/4638/FUL | Demolition of Barn A and adjacent buildings, and the erection of 1no. new-build dwelling (Plot 3) with garage, and associated driveway/gardens | Barn A Grove Farm The Street; DC/23/4639/FUL | Demolition of Barn C and adjacent buildings, and the erection of 2no. new-build dwellings (Plots 4 and 5) with garages, and associated driveways/gardens | Barn C Grove Farm The Street

Minutes of the Meetings held on 6 November and 4 December 2023

Neighbourhood Plan Update

UPDATES FROM CLERK AND COUNCILLORS

PIIP AND CIL FUNDING

A meeting had been arranged with SCC and the PCC to discuss works to improve the footpath at the Church.

FREEDOM OF INFORMATION ACT REQUESTS

A request had been received, and a copy of Great Bealings PC's request to SCC.

BEALINGS SCHOOL

The Council had been advised that a Community Open Tour was planned for 11.00 a.m. on 1 February. Places would need to be booked in advance.

ESC COMMUNITY PARTNERSHIP FORUM

Mr Carr reported on his attendance at a meeting at which the three priorities of 'Active Travel,' road and traffic safety and

environmental improvements had been discussed. He would attend the next meeting and the Annual Forum.

SAVID AND 20's PLENTY

The next SAVID meeting would be on 15 February. A meeting of 20's Plenty had not been attended due to its perceived 'urban' focus.

VILLAGE HALL MANAGEMENT COMMITTEE

Ms Saagi reported that about half the roof project funding had been raised and a working party and pop-up pub were planned.

HIGHWAYS

County Councillor Bryce had advised that she was pursuing the outstanding items. The Council had established that the rusted SID pole in The Street should be replaced by SCC by 12 March.

PLANNING APPLICATIONS

DC/23/4637/FUL | Demolition of Barn E and adjacent buildings, and the erection of 2no. new-build dwellings (Plots 1 and 2) with garages, and associated driveways/gardens | Barn E Grove Farm The Street
DC/23/4638/FUL | Demolition of Barn A and adjacent buildings, and the erection of 1no. new-build dwelling (Plot 3) with garage, and associated driveway/gardens | Barn A Grove Farm The Street

DC/23/4639/FUL | Demolition of Barn C and adjacent buildings, and the erection of 2no. new-build dwellings (Plots 4 and 5) with garages, and associated driveways/gardens | Barn C Grove Farm The Street

There was no objection to the applications subject to there being adequate screening. Clarification would be sought on whether CIL would be payable.

ESC has approved the following application:

dc/23/3407/ful | two storey rear extension, replacement roof to form first floor accommodation and alterations | solgarden playford road

DC/23/2095/VOC | Variation of Condition No. 2 of DC/22/2984/FUL - Construction of one

RIVERVIEW GARDENING

Garden & Grounds Maintenance

Providing all aspects of garden & grounds maintenance to both domestic and commercial customers.

Ride-on mower available

Green waste removed

Experienced - Qualified - Insured

Call Oliver 07779152936
01728 561990

mail:
Riverviewgardening@gmail.com



LIVE CLASSES

Bealings Village Hall
Friday Afternoon 12.45 & 2.00 p.m.

Zoom Classes
Tuesday morning 6.30 a.m. & 9.00 a.m.

Get in touch for more information & alternative venues
www.pilateswithkelly.co.uk
pilateswithkelly@hotmail.co.uk
07919377855



5 Quay Point, Station Road, Woodbridge, IP12 4AL
Email: reception@islandhousedentalcare.co.uk
Telephone: 01394 388008

island house DENTAL CARE **islandhousedentalcare.co.uk**



detached dwelling and garage - Change approved drawings to reflect amendments to Design. | Woodside Martlesham Road

The Council had received a copy of a formal complaint made by a resident to ESC in respect of current and previous development at the site and current flooding issues.

SCC/0059/23SC - Land off The Street, Little Bealings Construction of a Sewage Pumping Station, footpath, fencing, and associated apparatus (Anglian Water)

The applicant had been chased for an update on the flooding risk assessment.

DC/22/5004/FUL | Retention and completion of construction of 1 No building and use of land for vehicle and plant hire operator(s) comprising officer, workshops, associated parking, drainage infrastructure etc to allow for the hire, storage, sale, maintenance and servicing of vehicles, paint, machinery and equipment following enforcement case ref: ENF/21/0552 in relation to previous consent DC/19/2666/FUL | Kesgrave Quarry Sinks Pit Main Road Kesgrave

The Council had received a copy of a complaint made to the Environment Agency by the Sinks Valley Environmental Protection Group regarding noise pollution testing at the site. The Agency had stated that it intended to respond by 2 February.

THE ADMIRAL'S HEAD

ESC had advised that the listing of the pub and car park as an Asset of Community Value had expired on 7 December 2023.

ESC TOWN & PARISH PLANNING FORUM

This would be attended by Mr Carr and the Clerk on 17 January.

ESC PLANNING VALIDATION CONSULTATION

There were no comments to make.

NEIGHBOURHOOD PLAN UPDATE

The Working Group had appointed Ms Saagi as Chairman and had met with the consultant. The design consultant had visited the village, and the parish survey was being prepared.

reports from county and district COUNCILLORS

These are published on the Council's website: <https://littlebealings.onesuffolk.net/parish-council/district-and-county-councillor-reports/>

ANNUAL PARISH MEETING

This will be held in Bealings Village Hall at 7.00 p.m. on 4 March and local organisations and Anglian Water would be invited to give reports.

FINANCE

Quarterly Internal Review: Third Quarter

This would be carried out by Mr Cheeseman.

Income and Expenditure

Neighbourhood Plan Grant Funding of £9,645 had been received. Expenditure was approved for the Clerk's salary, including back dated national pay award, and expenses and PAYE, and for ESC's charge for the Parish Council election held in 2023.

NOTE OF MATTER CONSIDERED AT THE PARISH COUNCIL MEETING HELD ON 29 JANUARY 2024

A meeting was held in accordance with the Council's Standing Orders and the application of the Public Bodies (Admission to Meetings) Act 1960, given that the only business of the meeting was a matter from which it was proposed that the public would be excluded from attending, as their attendance would be prejudicial to the public interest due to the confidential nature of the business.

After consideration of the Council's budget for the year, it was resolved, that in order for the Council to respond appropriately to a Freedom of Information Act request which also requested personal data, and as such was a data Subject Access Request under Article 17 of the UK GDPR, the Council would enter into a contract to obtain necessary legal advice, in accordance with the Council's

BATES WELLS
& BRAITHWAITE
SOLICITORS



For you and your family

Providing legal advice when you need it most

Our services include:

FAMILY LAW:	RESOLVING DISPUTES:	PRIVATE CLIENT SERVICES:
<ul style="list-style-type: none">• Divorce & separation• Financial & property issues• Pension agreements & entitlements• Family mediation• Children & social care• Pre-nuptial/living together agreements• Civil partnerships• Same sex relationships	<ul style="list-style-type: none">• Personal injury• Clinical negligence• Houses, property & neighbours• Contentious wills & probate• Contract disputes• Consumer affairs/ faulty goods & service	<ul style="list-style-type: none">• Wills, trusts & probate• Powers of attorney• Residential property

FOR FURTHER INFORMATION CONTACT

 <p>Denise Head Partner/Solicitor & Mediator T 01473 219282 E denise.head@bates-wells.co.uk</p>	 <p>Christopher Mason Head of Dispute Resolution T 01473 295524 E christopher.mason@bates-wells.co.uk</p>
--	--

29 Lower Brook Street, Ipswich, Suffolk IP4 1AQ

www.bates-wells.co.uk

Financial Regulations.

DATE OF NEXT MEETING

The next meeting of the Council will be on Monday 4 March 2024 in Bealings Village Hall, immediately after the Annual Parish Meeting.

Please visit our website for further information, including reports, draft and approved minutes of Parish Council meetings:

<https://littlebealings.onesuffolk.net/parish-council/>

Carol Ramsden – Clerk to the Council
07731 456133
littlebealingspc@btinternet.com

ACH NEWS

Once again thank-you to everyone who made the Community Lunch on 6th. February a happy social occasion. Special thanks to Yvette Robinson for the delicious Bread and Butter pudding and Tracy Herrington

for providing a touch of Spring with colourful primroses for the tables.

The next **Community Lunch** will be on March 5th. 12.30 p.m. The menu will be

- Fish Pie & Green Beans,
- Pancakes etc.
- Tea/Coffee

To book contact 01473 620213. pandvcarr55@gmail.com

There will be a Warm Welcome at **'Time for Tea' on Sunday 17th. March 3.00 p.m.-5.00 p.m.**

No need to book just drop in...all welcome.

KNIT AND NATTER

On November 25th, 2023, Knit and Natter Group, Organised their first group fundraising event. The charity chosen was Alzheimer's Society. We all worked hard making a variety of items to sell. Baked cakes for the refreshment stall and

were able to have a cake stall too. Just before 2.00 p.m. we waited in anticipation. The doors opened and we had customers to welcome in. We were so pleased to have had so many people come to Angela Cobbold Hall to support our event. I can confirm that we made £583.10 in the 2hrs we were open. but afterwards we had various people who could not attend, who sent money in for the charity to make it up **£700.00** which all went to the Alzheimer's Society.



Thank you all. 'Knit and Natter's', who worked so well together to get this event up and running. Also, thank you, to all who came to support us on the day. and those who sent in a donation. A great result for our charity. *Sorry for the delay but we were too late for the December/ January mag. But it is here now. Thank everyone again.*

We are knit and nattering at Angela Cobbold Hall every Monday 1.30 p.m. to 4.00 p.m. Do pop in for half an hour and see what you think. Have a cup of tea or coffee and some of our tasty cakes. We have tea cakes or crumpets too.

Hope to meet up with you soon.

Yvette

BEACON HILL FARM SHOP

Home grown daffodils, Sunflowers Pumpkins, sweetcorn, Courgettes,

Honey from bees on our farm.

We stock sacks potatoes,

veg, eggs, Apple juice.

Flo gas, Logs, Kindling, coal,

Skinnners dog food.

Wild bird and chicken feed,

Wood shavings,

Salt for water softener and road

Bealings Road, Martlesham IP12 4RP

Open Tues - Fri 9-5 & Sat 9-12

Phone 0770955275

email: beaconhillfarm@hotmail.com

BYGONES AND CURIOS

Collectable objects of age and interest for sale

View by appointment... browsers welcome!

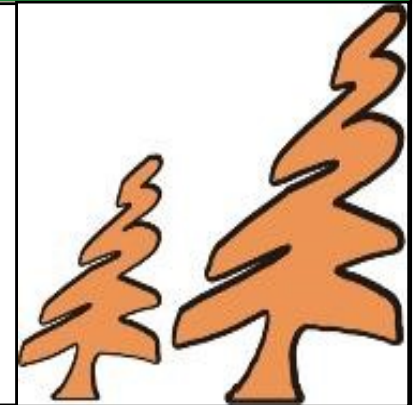
01473 620213

pandvcarr55@gmail.com

PAULS TREE SERVICES LTD

Covering Suffolk

- ★ Free Quotes on Request
- ★ Pruning, Reshaping
- ★ Trees & Shrubs
- ★ Fully Insured
- ★ NTPC Qualified
- ★ Tree Surgery & Felling
- ★ All Waste Chipped & Removed from Site
- ★ Emergency Services Available
- ★ Stump Grinding



FELIXSTOWE 01394 277776 MOBILE 07979 226497

Lazy Acres, Falkenham, IP10 0QY

www.paulstreeservices.co.uk

All Saints Church Little Bealings

Are you looking for a quiet space to hold an event, perhaps a church away day or regular group meet-ups? All Saints can offer a flexible space for multiple uses.

Our church has a very special, warm and unique character, with its interior arches. The acoustics are amazing and there are large windows in the North Aisle that cast plenty of light.

- **Fully fitted kitchen**
- **Wi-fi**
- **Large screen multimedia system with projector**
- **Central heating/cosy log stove**
- **Comfortable seating**

Email lbpcsecretary@gmail.com for further hire information

Photo credit John Lanagan Photography

The Angela Cobbold Hall, Little Bealings

The Hall &/or Reading Room and modern Kitchen are available to hire for social occasions, classes, charity fund raising events and private parties.

Private hire can include the use of facilities including
smart television flexible staging coloured LED lighting
table tennis small snooker table exercise bikes
dance mirror board games

- ♦ Seating and place settings for up to 50 people
- ♦ Parking for 5 cars
- ♦ Cutlery, crockery and glasses can be borrowed for home use

Further information, enquiries and bookings 01473 620213
pandvcarr55@gmail.com

RYDER-DAVIES & PARTNERS
Veterinary Practice

Woodbridge
18 Grundsburgh Road
IP12 4HG
01394 380083

Ipswich
412 Woodbridge Road
IP4 4EJ
01473 274040

Felixstowe
118 Gamson Lane
IP11 7FG
01394 284554

Rendlesham
Walnut Tree Avenue
IP12 2GG
01394 420964

Dedicated team of experienced vets, nurses and support staff

24 hour care provided by our own vets and nurses

Pay monthly healthcare plans available for cats, dogs, rabbits & horses

Proud to be an independent practice taking care of your pets since 1973

To find out more visit our website: www.ryder-daviesvets.co.uk

EVENTS AT THE ANGELA COBBOLD HALL

MARCH

- Friday 1st** 7.15 p.m. **FISH & CHIPS***
Please place your order beforehand via the contact details at the bottom of the page.
- Monday 4th from 1.30 p.m. (and every week)** **KNIT & NATTER***
- Tuesday 5th** 12.30 p.m. **COMMUNITY LUNCH**
pandvcarr55@gmail.com or 01473 620213 to book
- Thursday 7th (and every week)** 9.30 - 11.30 a.m. **TAP DANCING**
- Friday 8th** 6.30 p.m. **SOCIAL FRIDAY***
Licensed Bar, Darts, Snooker, Table Tennis, Quoits, Exercise Bikes, Chess, Board Games, etc. Food provided.
- Thursday 14th** 2.15 - 2.45 p.m. **LIBRARY VAN**
- Friday 15th** 6.30 p.m. **ST PATRICK'S DAY SOCIAL FRIDAY**
Yes, it's that time of year again, so come & kiss the Blarney Stone. National dress encouraged (green!)
- Sunday 17th** 3.00 - 5.00 p.m. **'TIME FOR TEA'***
- Wednesday 20th** 7.30 p.m. **GARDENING CLUB 'SPRING IS SPRUNG'**
Free entry (donations welcome**)
- Friday 22nd** 6.30 p.m. **SOCIAL FRIDAY***
- ### APRIL
- Tuesday 2nd** 12.30 p.m. **COMMUNITY CELEBRATION LUNCH**
pandvcarr55@gmail.com or 01473 620213 to book.
- Friday 5th** 10.00 a.m. 12.00 p.m. **FOOT CLINIC & COFFEE MORNING***
For appointments, contact Charlotte on 07712 448775
- Friday 5th** 7.15 p.m. **FISH & CHIPS***

* This event is run in conjunction with the East Suffolk Council Warm Welcome Scheme where the hall will be available as a warm space with light refreshments including tea/coffee available on this occasion.

** To ROPETH (Charity Number 1181869) owner of the Angela Cobbold Hall.

email: margaretroseboom@yahoo.co.uk
tel: 01473 735153



**EAST SUFFOLK
WARM WELCOMES**

TRADITIONAL MOLECATCHER & WARRENER

OVER 50 YEARS EXPERIENCE
NO JOB TOO SMALL OR TOO BIG
FULLY INSURED



A MEMBER OF ASSOCIATION OF PROFESSIONAL MOLE CATCHERS
WE CONTROL MOST PESTS AND VERMIN.

EXPERTS AT RABBIT CONTROL, TRAPS AND TRAPPING

NO CALLOUT FEE AND NO VAT

TEL: GRUNDISBURGH

01473735168 or **07765 643484**

WWW.DISCOUNTPESTCONTROL.ORG

DON'T GET STUNG BY SILLY PRICES



WE ARE FULLY INSURED AND QUALIFIED TO CARRY OUT THIS WORK

BASED IN GRUNDISBURGH WE OFFER A QUICK RELIABLE SERVICE *DOING GREAT SINCE 1988*

PRICES START FROM £35

TEL: **01473 735168**

or **07765 643484**



Architectural Services

Friendly and bespoke architectural design service for clients throughout Suffolk and beyond.

Extensions, conversions, alterations, new builds.

email: nathan@naarchitectural.co.uk

www.naarchitectural.co.uk

phone: **01473 611682**

CIAT Registered Practice



ALISON CHEESEMAN ATCL LTCL

Enjoyable, fun, piano lessons tailored to individual needs and expectations, with the choice of playing on either digital or acoustic pianos, or both.

Working towards exams, ABRSM, Trinity Guildhall, music theory, GCSE practical music performance, or perhaps wanting to play piano for pleasure?

Piano lessons with a smile from a lifetime of musical experience.

All abilities most welcome.

Email:

Alison.cheeseman@btinternet.com

Tel: 01473 611618



PLAYFORD

PRIEST IN CHARGE

Reverend Gary Jones

revgaryjones1985@gmail.com

07714 614095

PARISH COUNCIL CLERK

Mrs. Marian Hedgley, The Coach House, Playford Mount, Great Bealings, IP13 6PH
lps 738468

PCC SECRETARY

Mrs. Eileen Stennett, Lux Farm, Playford Road, Playford

lps 635236

PLAYFORD WI

Sharing information and opinions on issues ranging from gambling advertising, dental access and poor housing to the treatment of women in the criminal justice system, all Members really enjoyed debating the WI Resolutions shortlist at our February meeting. Having cast our individual votes we now wait to hear the national result as to which topic/s will go forward towards developing an official WI campaign. The discussions ran on so long that the planned crafting session had to be deferred to our next meeting! On March 5th we'll also have a hot-off-the-press report from 2 members attending the Suffolk East Federation WI AGM being held earlier that day at Trinity Park where guest speaker will be Jago Cooper; Director of the Sainsbury Centre, Norwich and Professor of Art & Archaeology. playfordwi@gmail.com



Can you help us make Playford a safer place to live?

We have the opportunity to create a Playford Speedwatch Team to monitor vehicles coming through our village. This scheme is proven, over time, to reduce speeds and will make Butts Road a safer road for walkers, cyclists, riders and children.

Could you be part of our team?

Just 1hour a day for 1 week, each month.

You can see more in the video at:
www.suffolkroadsafe.com/speed-and-communities-2/safecam-and-community-speedwatch

If you think you could help our village please email the Parish Clerk at playfordpc@hotmail.co.uk

Thank you



Building Bee Cafes

Community event for all ages

Sunday 17th March

11am - 12pm at Playford Village Hall



Come as a family and help to build one of our 12 bee cafe kits. Drills, wood and screws provided

Part of the 8-Lines project, linking Bee corridors through Rushmere, Woodbridge and Rendlesham.

Bee Cafes use natural materials like wood & hessian, recycled 2l plastic bottles and native flowers from Katie's Gardens. Recycle your plastic 2 Litre drinks bottles - deposit point at IP13 6NY



Good Friday at Playford Church

Friday 29th March



Starting with Hot Cross buns & drinks

Planting Bee Cafes with flowers

Easter egg hunt in the churchyard

Bible Story trail

10:00 - 11:30am



Followed by a reflective service in the church at 12pm



BINKY AND CO.

Binky had toothache for some time now. But it came and went so he put off going to the dentist for as long as he possibly could. Not that he was scared of the dentist. Oh no. Just couldn't spare the time. Know what I mean? However, he had just read in the paper that the last dentist in his town, Lesser Bealings, had now retired and that the nearest dental surgery was twenty miles away. Binky was furious. He would now have a forty-mile round trip just to get a mouthful of pain. Plus, he was being asked to think of the planet and not drive his car so much. He decided to go by public transport. The first and only bus into Waswich passed the end of his road at nine in the morning, took thirty minutes to get there and the only bus back left Waswich at three in the afternoon. So, his window of opportunity as he put it was an appointment at between the hours of ten in the morning and two in the afternoon. He rang the surgery for an appointment.

The receptionist answered the phone. "Good morning, Doctor Spitout's surgery how may I help?" Binky explained his problem, no dentist at Lesser Bealings and he had toothache. "So, you are not registered with us then?" came the reply. Binky confirmed that was the case. "Well, I cannot give you an appointment until you are registered, I will send you a form." "Just a minute" said Binky, "Can't I come in, sign the form and then see the dentist?" "Oh no came the chuckling reply. "That would not comply with procedure." "Whose procedure?" asked Binky. "Our registration procedure." Said the receptionist. "Well change the procedure or make an exception" retorted Binky. "Good heavens we cannot do that" replied the receptionist. "Why ever not?" asked Binky. "Because we haven't a procedure for doing that." said the ever-helpful receptionist. Binky nearly exploded. "What is the NHS coming to?" exclaimed Binky. "I don't know, we only take private patients." came the reply. Binky would have exploded but he had already done that and two explosions in one day would have been bad for his health. Especially his teeth. "Ok, ok" said a flustered Binky. "If you send me a form, I return it, you accept it and I make an appointment, how much would it cost to drill and fill my aching tooth?" "About two hundred pounds." Said the receptionist. "Right, we will do that then." said Binky.

"Well, that will not help that much" replied the what by now Binky was calling in his mind 'the tooth witch.' "Why not?" asked a weary Binky. "Because we are not taking on any new patients until next year." Binky was furious. "Why didn't you tell me that in the first place?" asked Binky. "Well, you didn't ask me" replied the tooth witch. "But you could have told me right at the beginning when you talked about sending me a form." shouted Binky. "But it's against our procedure to answer a question that hasn't been asked" said the ever-maddening receptionist.

Binky slammed the phone down and went to his shed.

He picked up a pair of long-nose pliers.

Piano Lessons

*All ages & abilities welcome
from
Beginners to Advanced*

Theory tuition
ABRSM or Trinity College exams

Come and learn about the piano at
your own speed;
free, no obligation half hour taster
session

Kate Parish
BA (Hons), DipMus (Open)

email: kate.parish44@gmail.com
tel: 01473 612997
07935 337694

James Aldous

Heritage Clocks



Restoration,
Repairs & Sales
of Fine Clocks
& Barometers

28 Kingsgate Drive, Ipswich,
Suffolk IP4 4DL
01473 713132
07771681115
heriageclocks@hotmail.co.uk

Collection & Delivery all areas	Clocks & Barometers bought & sold	Fee estimates & advice given
---------------------------------------	---	---------------------------------



**Foot Clinic @ The Angela
Cobbold Hall running on
Fridays 6 weekly**

**To book an appointment
please call Charlotte on
07712448775**

**Home Visits are also
available.**

**Email:
charlottefhp@outlook.com**

FowlerWeb



**Solving issues with computers, tablets,
laptops, smartphones and TVs**



Marc Fowler
07812 453965

marc@fowlerweb.net
www.fowlerweb.net

PLAYFORD POP-UP

YOUTH GROUP!

Free Food!

FRIDAY
MARCH 22ND
3:45PM TO 5PM

PLAYFORD
VILLAGE HALL

ALL AGED 10-16
ARE WELCOME!

Contact Ben Wale
for more information, or if you'd like
to sponsor the group at £20 a month
as an individual or business.
ben.wale@cofesuffolk.org
07769183638



Crafts and
Chill zone!

Play
games!



NEW TO THE VILLAGE?

Great Dealings: For a Welcome Leaflet please contact
Norman Porter on 735565 or nhp@rillcott.co.uk

Little Dealings:
Please see the parish website for information: www.littledealings.onesuffolk.net

Dealings:
For Information please see the parish website: www.dealings.org.uk

GOOD NEIGHBOUR SCHEME - Services for those with Mobility Problems
This local Scheme is now up and running. If you need help with things like:

- lifts especially to doctors' surgeries and hospital appointments
- getting prescriptions
- minor domestic repairs, such as checking smoke alarms and changing light bulbs
- short term help with pets

phone 01473 345400 and leave a message – someone will call you back.

For those who need regular transport, the Coastal Accessible Transport Service is a charity which provides lifts. Tel 01728 830516 for details.

DEALINGS AND PLAYFORD NEWSGROUP

To be added to the growing number of residents who receive regular emails about local news, events and services send your email address to:
dealingsplayfordnews@googlemail.com

BUSES

Timetables for the 70 and 70A services serving the local area are available at:
<https://www.suffolkonboard.com>

LOCAL CRIME INFORMATION

The Police Direct scheme sends phone emails with the latest information on local crime, warnings about bogus callers, crime reduction advice and updates from the Safer Neighbourhood Team. Sign up at
<https://www.suffolk.police.uk/contact-us/police-connect-sign>
Report Anti-Social Behaviour call 111 (Police) or 03330162000 (ESC)

NEED TO REPORT A PROBLEM?

Road repairs and Maintenance – potholes, overhanging vegetation, signs, flooding, verge cutting etc – problems should be reported on line at:
<https://highwaysreporting.suffolk.gov.uk/> or by email to:
customer.services@suffolk.gov.uk or phoning 0345 606 6171 In an emergency contact the police.

Public Rights of Way Footpath problems can be reported to Suffolk County Council
www.suffolk.gov.uk

Fly Tipping and Litter: Contact Suffolk Coastal Services on 01394 444000 or email www.eastsuffolk.gov.uk

CULPHO

PARISH COUNCIL CLERK

John Ager, 8 Postmill Close, Grundisburgh IP13 6UU

01473 735541

CHURCHWARDEN

Richard Garnham, Cherry Box Cottage, Meeting Lane, Grundisburgh IP13 6TT

01473 738139

CULPHO CHURCH AND COMMUNITY NEWS

Although it is a relatively quiet time of year on Arable Farms the Sugar Beet crop continues to be harvested and the crop delivered to the Beet Factory at Bury St Edmunds alongside the A14.

In recent years the introduction of machines such as this Maus (pronounced Mouse) has revolutionised loading Sugar Beet into Lorries. Loading directly from the field alleviates mud being deposited onto the highway.



CHURCH SERVICES FOR MARCH AT ST BOTOLPH'S

Sunday 24th	3.00 p.m.	Evensong
Wednesday 27th	9.30 a.m.	Holy Communion

*Richard Garnham
Churchwarden.*

Please keep this page for future reference, it will only appear if space permits

ACTIVITIES/SERVICES

BEALINGS **VH: Village Hall** **AS: All Saints** **ACH: Angela Cobbold Hall**

BALLROOM DANCING	VH	Tue	7.30 p.m.	<i>Teresa Jay 07929310480</i>
CARPET BOWLS	VH	Wed	2.00 p.m.	<i>Kathy Price 621419</i>
DANCE CLASS	VH	Wed	9.30 a.m. .	<i>Debbie Watkins-Jones 0711161522</i>
	VH	Fri	9.30 a.m. .	
FYNN VALLEY WALKS	AS	Wed	10.30 a.m.	Walks leave from the church
JOHN BELSTEAD SPORTS COURT				
Subscribers https://v2.hallmaster.co.uk/Diary/ViewWeeklyDiary/6622				
Non-Subscribers http://bealingsvillagehall.org.uk or Volunteer Administrator:07925 181390				
KNIT & NATTER	ACH	Mon	1.30 p.m.4.00 p.m.	<i>Info Contact 01473 623133</i>
LIBRARY	ACH	Thu	2.15 - 2.45(every 4th Thu)	<i>07809594685</i>
PILATES with DIDI	VH	Mon	7.30 p.m.	<i>Helen 07889 907615</i>
PILATES	VH	Tue	9.30 a.m.	<i>Caroline Boggon 07850683196</i>
PILATES	VH	Fri	12.30 p.m.	<i>Kelly Steventon 07919377855</i>
READING ROOM	ACH	Sat	10.30-12.30or by arrangement	<i>Info 01473 620213</i> Books for all ages, jigsaw puzzles, DVDs etc to borrow. Drop off for FIND donations.
SNOOKER	VH	Any day	<4 hours	<i>Margaret Wilson 07769195132</i>
SOCIAL EVENING	ACH	Fri	7.00 p.m.	<i>Info 01473 735153</i> Licensed bar, pub games etc. and other events
VILLAGE HALL BOOKING				<i>Margaret Wilson 07769195132</i> : <i>bookings.vh.bealings@btinternet.com</i>
YOGA	VH	Sat	9.30 a.m.	<i>Caroline Boggon 07850683196</i>

PLAYFORD

PH: Parish Hall

ART CLUB	PH	Thu	10.00 a.m.	<i>Mary Spillett 01394 385295</i>
LIBRARY		Thu	1.50 – 2.05 (every 4 weeks)	<i>07809594685</i> mobile library at phone box
MILK		Tue, Thu, Sat		<i>Dairy Crest 747272</i>
NEWSPAPERS				<i>DC Patrick Newsagents 01986 874305</i>
PARISH HALL BOOKING		Book on line:		<i>bookings.playfordvillagehall@gmail.com</i> or contact via voicemail 01473 487215
PILATES	PH	Wed	7.30 p.m. - 8.15 p.m.	<i>Julie Gorevan on 07702 883245</i>
TODDLERS	PH	Fri	9.30 a.m.	toddler group <i>playfordtoddlers@gmail.com</i>
WI	PH	Tue	7.30 p.m.(1st in month)	<i>Sue Bruce 738265</i>



APRIL 2024 NEWS

Contributions for the April 2024 News to be submitted by:

5.00 p.m. Tuesday, 19th March

The news will be ready for distribution by **Saturday, 30th March.**

DISCLAIMER

The views expressed in this magazine are those of the contributors and do not necessarily reflect the views of the Editorial Team.

Editorial Team email address: fynnlarknews@gmail.com

Fynn - Lark News

Enquiries and Submission of Articles fynnlarknews@gmail.com

Team Co-ordinator & Advertising	Norman Porter	01473 735565
Distribution	Peter Carr	01473 620213
Editorial Team	Jane Hartley	01473 612122
Design & Layout	Tim Llewellyn	01394 450403